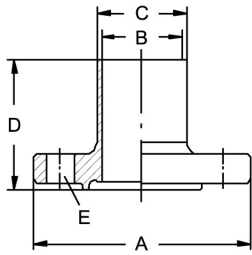


Aseptic-/Hygienic-Flange pipe connections DIN 11853-2 + DIN 11864-2
Art.No
EUR
Art.No
EUR
Flange with groove ISO, DIN 11864-2 (AISI316L-1.4435)

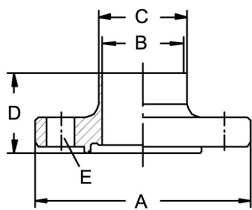
DN	A	B	C	D	E
114,3	168	109,7	114,3	59,5	8xM10x40

AISI316L-1.4435	
472539	Enquiry

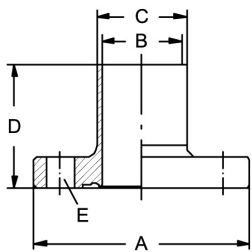

Flange with groove ISO, DIN 11853-2

DN	A	B	C	D	E
13,5	54	10,3	13,5	41,5	4xM8x30
17,2	59	14	17,2	41,5	4xM8x30
21,3	62	18,1	21,3	25,5	4xM8x30
26,9	69	23,7	26,9	25,5	4xM8x30
33,7	74	29,7	33,7	25,5	4xM8x30
42,4	82	38,4	42,4	25,5	4xM8x30
48,3	88	44,3	48,3	25,5	4xM8x30
60,3	103	56,3	60,3	25,5	4xM8x30
76,1	125	72,1	76,1	25,5	8xM10x35
88,9	137	84,3	88,9	27,5	8xM10x35
114,3	168	109,7	114,3	27,5	8xM10x40

AISI316L-1.4404	
472429	Enquiry
472430	Enquiry
472431	33,40
472432	37,20
472433	38,60
472434	42,70
472435	47,20
472436	56,70
472437	69,90
472438	80,10
472439	103,30


Flange with notch DIN, DIN 11864-2

DN	A	B	C	D	E
10	54	10	13	40	4xM8x30
15	59	16	19	40	4xM8x30
20	64	20	23	40	4xM8x30
25	70	26	29	40	4xM8x30
32	76	32	35	45	4xM8x30
40	82	38	41	45	4xM8x30
50	94	50	53	45	4xM8x30
65	113	66	70	54	8xM8x30
80	133	81	85	58	8xM10x35
100	159	100	104	58	8xM10x40
125	183	125	129	60	8xM10x40
150	213	150	154	60	8xM12x50



AISI316L-1.4404		AISI316L-1.4435	
481830	39,10	472730	Enquiry
481831	40,50	472731	Enquiry
481832	41,70	472732	Enquiry
481833	47,10	472733	Enquiry
481834	52,20	472734	Enquiry
481835	57,10	472735	Enquiry
481836	63,20	472736	Enquiry
481837	93,80	472737	Enquiry
481838	122,90	472738	Enquiry
481839	151,30	472739	Enquiry
481841	221,80	472741	Enquiry
481842	307,80	472742	Enquiry